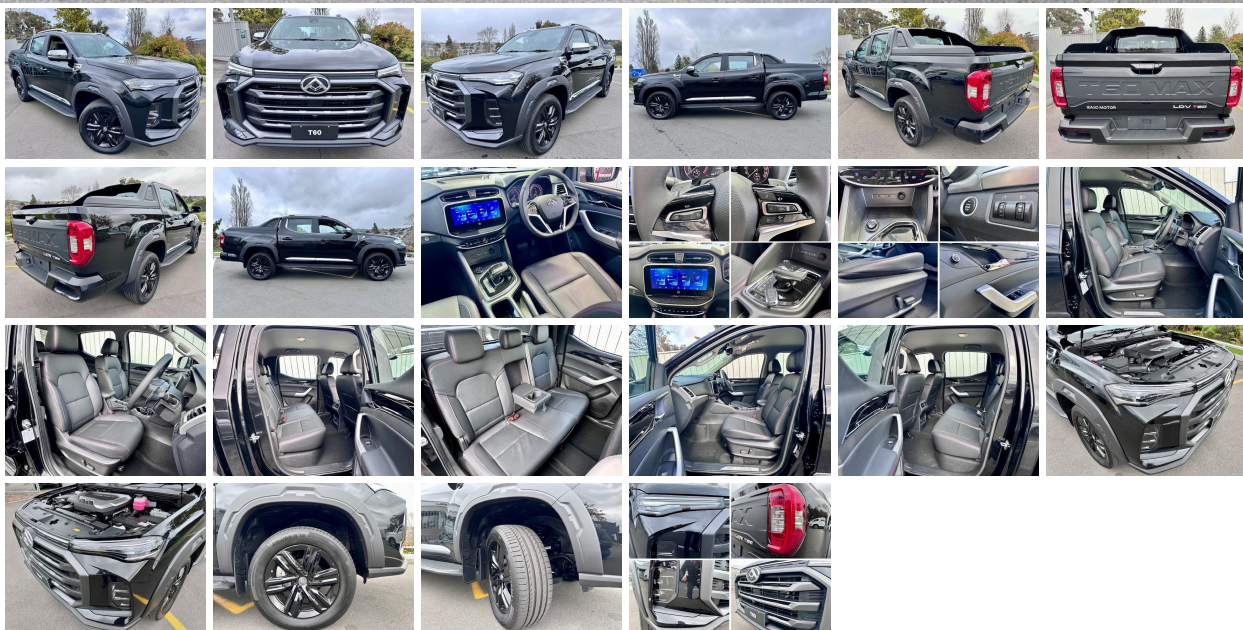


2025 LDV T60 Luxury 2.0l Bi-Turbo Diesel 4WD | #106253

\$49,990.00 \$39,990.00



NEW LDV T60 Luxury 2.0l Bi-Turbo Diesel 4WD

START 2025 STRONG WITH 1.8% INTEREST ACROSS THE LDV RANGE*! – FREE NORTH ISLAND DELIVERY

Terms and conditions apply Finance offer valid until 21st May or while stock lasts. *

APPLY FOR VEHICLE FINANCE WITH UDC – [APPLY ONLINE](#)

ON ORDER - Secure today with \$1,000 deposit. Contact [Our Team](#) regarding delivery times and secure now through Morrell Motors, award winning Dealership!

- **SAVE \$10,000**
- **7 YEAR/200,000KM WARRANTY**
- **7 YEAR ROADSIDE ASSISTANCE**
- **7 YEAR WOF**
- **FREE NORTH ISLAND DELIVERY**
- **1.8% INTEREST FINANCE OFFER**

NEW LDV T60 Luxury 2.0l Bi-Turbo Diesel 4WD - \$39,990 + on road costs

Engine/Drivetrain:

- 2.0 Bi-Turbo Diesel
- 160KW/480NM 4 cylinder
- 4WD with high/low range
- 8 Speed automatic transmission
- 3000kg braked tow rating

Safety:

- 5-Star ANCAP safety rating
- 6 Airbags
- Rear parking sensors
- ABS anti-lock braking system
- EBD electronic brake force distribution
- EBA emergency brake assist
- ESC electronic stability control
- Hill descent control

- Hill start assist
- LDW lane departure warning
- Driver fatigue warning
- Tyre pressure monitoring
- ISOFIX & child seat anchors

Interior:

- 12.3-inch touch screen
- Leather seats
- Push button start
- Cruise control
- 360° panoramic camera
- Steering wheel controls
- Electric wing mirrors
- Auto headlights
- 2 x USB sockets
- 2 x accessory sockets
- 6 way electric adjusting front seats
- Rear under seat storage
- Bluetooth audio/Apple CarPlay

Exterior:

- 19-inch alloy wheels
- Side steps
- intelligent proximity keyless entry
- Auto folding mirrors
- Rear fog lamps
- Spray in tray liner
- Roof Rails

Warranty:

- 7 year/200,000km
- 7 year roadside assistance
- 7 year WOF

[Find Out More](#)

Please [contact](#) our friendly sales team for full detailed specifications, accessory price list a finance/lease quote or trade in estimate.

[Brand New](#) models available in a range of colours.

View our [testimonials](#) on our website or follow us on [facebook](#) and see what our customers have to say!

Morrell Motors is one of Taupo's longest standing automotive Dealerships, operating since 1983. Come and experience the difference of buying a NEW LDV from our trusted team.

***EXPLORE FULL DETAILS ONLINE – [VIEW HERE](#)**

Specifications

Stock Number: 106253

Year: 2025

Make: LDV

Style: Utility

Air Bags: 6

Interior Colour: Black Leather with Red Stitching

Seats: 5

Stereo Type: 12.3 Inch Touchscreen FM / AM / USB / Bluetooth / Apple CarPlay / Android QD link

Fuel Type: Diesel

Kilometres: 10

Transmission: 8 Speed Automatic with Paddle Shift

CC Rating: 1996

Engine Details: 2.0 Litre 160KW / 480NM Direct injection Bi-Turbo Diesel 4 Cylinder

Drive Train: 4WD with High / Low Ratio

Doors: 4

Exterior Colour: Metal Black

Features

• USB • Turbo • Traction Control • Tinted Windows • Stability Control • Smart Key • Reversing Camera • Remote Locking • Rain Sensing Wipers • Push Button Start • Power Windows • Power Steering • Parking Sensors • NZ New • Leather Seat • Immobiliser • Heated Seats • GPS/Sat Nav • Driving/Fog Lights • Electric Seats • Electric Mirrors • Cruise Control • Climate Control • Child Seat Anchor Pts • Central Locking • Body Kit • Bluetooth • Auto Lights • Alloys • Air Conditioning • ABS • 4 Wheel Drive

Fuel Saver & Safety Rating

Fuel Economy: 10.4L per 100km

CO2 Emissions: **278 grams/km**

Annual fuel cost of \$3,980 - Cost per year is an estimate based on diesel price of \$2.00 per litre and an average distance of 14000 km. Includes Road User Charges (RUC). Emissions and Energy Economy figures standardised to 3P WLTP.

Rebate and Fee:



MORRELL MOTORS LTD

your one stop motoring shop - people doing business with people

17 Waikato Street (adjacent to
Countdown)
Taupo PO Box 867

07 378 5759

sales@morrellmotors.co.nz

[Mark Morrell](#)

021 759 070

[Emily Hill](#)

021 673 662

[Garry Morrell](#)

027 274 7579