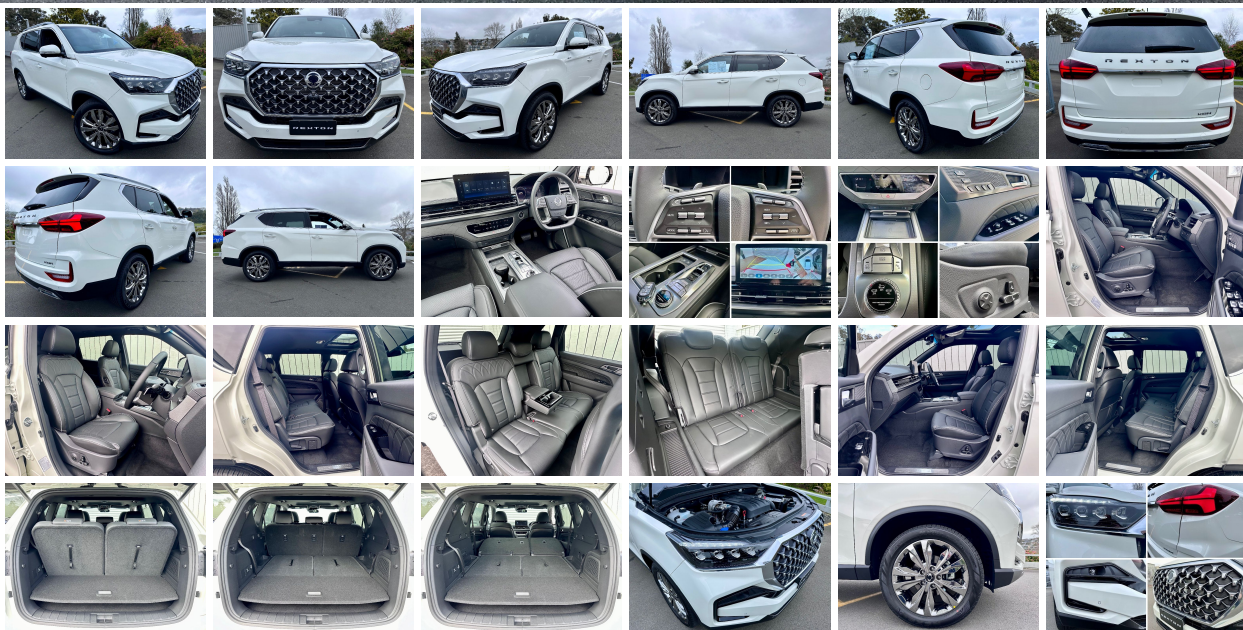


2024 KGM Rexton 2.2i Ultimate 4WD | #109783

\$69,990.00



NEW KGM Rexton 2.2I Ultimate 4WD

INTRODUCTORY OFFER \$69,990 – FREE NORTH ISLAND DELIVERY

IN STOCK - Secure today with \$1,000 deposit. Contact [our team](#) regarding delivery times and secure now through Morrell Motors, award winning Dealership!

NEW MY24 KGM Rexton 2.2I Ultimate 4WD - \$69,990 + on road costs

Engine/Drivetrain:

- 2.2I Turbo Diesel
- 148KW/441NM
- 8 Speed automatic transmission
- 3500kg braked tow rating
- 4WD

Safety:

- Active rollover protection
- Anti-locking braking
- Tyre pressure monitoring
- Electronic stability program
- Front, side & knee airbags
- Reverse camera
- Rain sensing wipers
- Hill decent control
- Traction control system

Interior:

- Bluetooth audio apple CarPlay/Android Auto
- Multi-function steering wheel
- Push button start
- Dual zone climate control
- 12.3" touch screen infotainment
- Leather seats
- Electric heated & ventilated front seats

Exterior:

- 20" alloy wheels

- Smart proximity keyless entry
- Roof rails
- Fog lights

Warranty:

- 5 Year/150,000km

Please [contact](#) our friendly sales team for full detailed specifications, accessory price list a finance/lease quote or trade in estimate.

[Brand New](#) models available in a range of colours.

View our [testimonials](#) on our website or follow us on [facebook](#) and see what our customers have to say!

Morrell Motors is one of Taupo's longest standing automotive Dealerships, operating since 1983. Come and experience the difference of buying a NEW KGM from our trusted team.

Specifications

Stock Number: 109783

Year: 2024

Make: KGM

Style: SUV

External Web Link:

Air Bags: 9

Interior Colour: Black Leather with Heated Front & Rear Outboard Seats

Stereo Type: 12.3 Inch Touchscreen FM / AM / USB / Bluetooth / Apple CarPlay / Android Auto

Seats: 7

Fuel Type: Diesel

Kilometres: 10

Transmission: 8 Speed Automatic with Paddle Shift

CC Rating: 2175

Engine Details: 2.2 Litre 148KW / 441NM Direct Injection Turbo Diesel 4 Cylinder

Drive Train: Selectable 4WD with High/Low range

Doors: 5

Exterior Colour: Grand White

Features

• USB • Turbo • Reversing Camera • Traction Control • Tinted Windows • Sun Roof • Stability Control • Smart Key • Remote Locking • Rear Wiper • Rain Sensing Wipers • Push Button Start • Power Windows • Power Steering • Parking Sensors • NZ New • Memory Seats • Leather Seat • Immobiliser • Heated Seats • GPS/Sat Nav • Driving/Fog Lights • Electric Seats • Electric Mirrors • Cruise Control • Climate Control • Child Seat Anchor Pts • Central Locking • Body Kit • Bluetooth • Auto Lights • Alloys • Air Conditioning • ABS • 4 Wheel Drive

Fuel Saver & Safety Rating

Fuel Economy: **10.2L per 100km**

CO2 Emissions: **261 grams/km**

Annual fuel cost of \$3,920 - Cost per year is an estimate based on diesel price of \$2.00 per litre and an average distance of 14000 km. Includes Road User Charges (RUC). Emissions and Energy Economy figures standardised to 3P WLTP.

Rebate and Fee:



MORRELL MOTORS LTD

your one stop motoring shop - people doing business with people

17 Waikato Street (adjacent to
Countdown)
Taupo PO Box 867

07 378 5759
sales@morrellmotors.co.nz

Mark Morrell
021 759 070

Emily Hill
021 673 662

Garry Morrell
027 274 7579