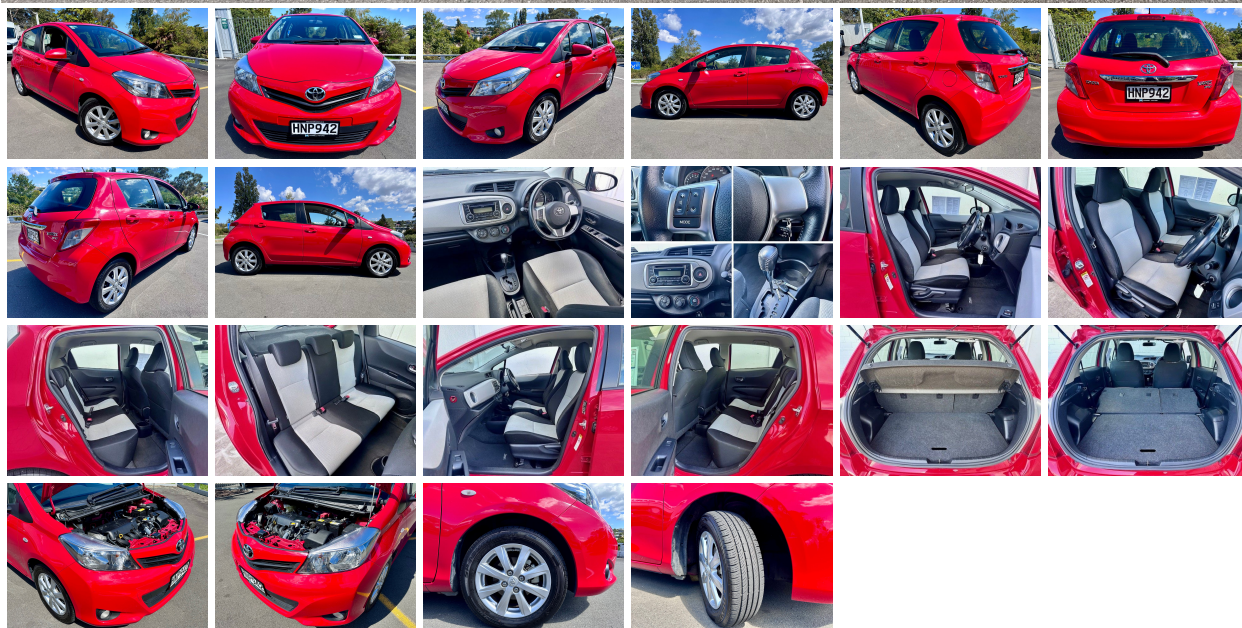


## 2014 Toyota Yaris YRS 1.5P Hatch | #HNP942

\$11,990.00



# **2014 Toyota Yaris YRS 1.5P Hatch**

**2014 Toyota Yaris YRS 1.5P Hatch - \$11,990 Drive Away!**

## **Engine/Drivetrain:**

- 1.5 litre 80KW/141NM DOHC VVT-I 4 cylinder
- 4 speed automatic
- Front wheel drive

## **Safety:**

- 9 SRS air bags – dual front, side, curtain & driver knee
- Electronic stability/traction control
- ABS braking with EBD and brake assist
- Cruise control
- Full lap & diagonal safety belts
- ISOFIX & child seat anchors

## **Interior:**

- Black/grey cloth trim
- Height adjustable driver's seat
- Air conditioning
- AM/FM/CD/AUX/USB/Bluetooth
- Multi-function steering wheel
- Electric windows
- Electric mirrors
- Remote central locking
- Immobiliser
- 60/40 split folding rear seat
- Cargo blind

## **Exterior:**

- 5 door hatchback
- 15-inch alloy wheels
- Driving lights

## **Warranty:**

- MTA dealer warranty

Please [contact](#) our friendly sales team for full detailed specifications, accessory price list a finance/lease quote or trade in estimate.

View our [testimonials](#) on our website or follow us on [facebook](#) and see what our customers have to say!

Morrell Motors is one of Taupo's longest standing automotive Dealerships, operating since 1983. Come and experience the difference of buying a Premium Used Car from our trusted team.

## **Specifications**

**Stock Number:** HNP942

**Year:** 2014

**Make:** Toyota

**Style:** Hatchback

**Drive Train:** Front Wheel Drive

**Engine Details:** 1.5 Litre 80KW / 141NM (Chain Drive) DOHC VVT-I 4 Cylinder

**Interior Colour:** Black / Grey Cloth Trim

**Air Bags:** 9

**Fuel Type:** Petrol

**Seats:** 5

**Stereo Type:** AM / FM / CD / AUX / USB / Bluetooth Audio with Steering Wheel Controls

**Transmission:** 4 Speed Automatic

**Kilometres:** 47454

**CC Rating:** 1497

**Doors:** 5

**Exterior Colour:** Red

## **Features**

• USB • Traction Control • Stability Control • Remote Locking • Rear Wiper • Power Windows • Power Steering • NZ New • Immobiliser • Driving/Fog Lights • Electric Mirrors • Cruise Control • Child Seat Anchor Pts • Central Locking • Bluetooth • Alloys • Air Conditioning • ABS

## **Fuel Saver & Safety Rating**

Fuel Economy: **7L per 100km**

CO2 Emissions: **168 grams/km**



Annual fuel cost of \$2,740 - Cost per year is an estimate based on petrol price of \$2.80 per litre and an average distance of 14000 km. Emissions and Energy Economy figures standardised to 3P WLTP.

Rebate and Fee:



**MORRELL MOTORS LTD**

your one stop motoring shop - people doing business with people

17 Waikato Street (adjacent to  
Countdown)  
Taupo PO Box 867

07 378 5759

[sales@morrellmotors.co.nz](mailto:sales@morrellmotors.co.nz)

Mark Morrell

021 759 070

Emily Hill

021 673 662

Garry Morrell

027 274 7579