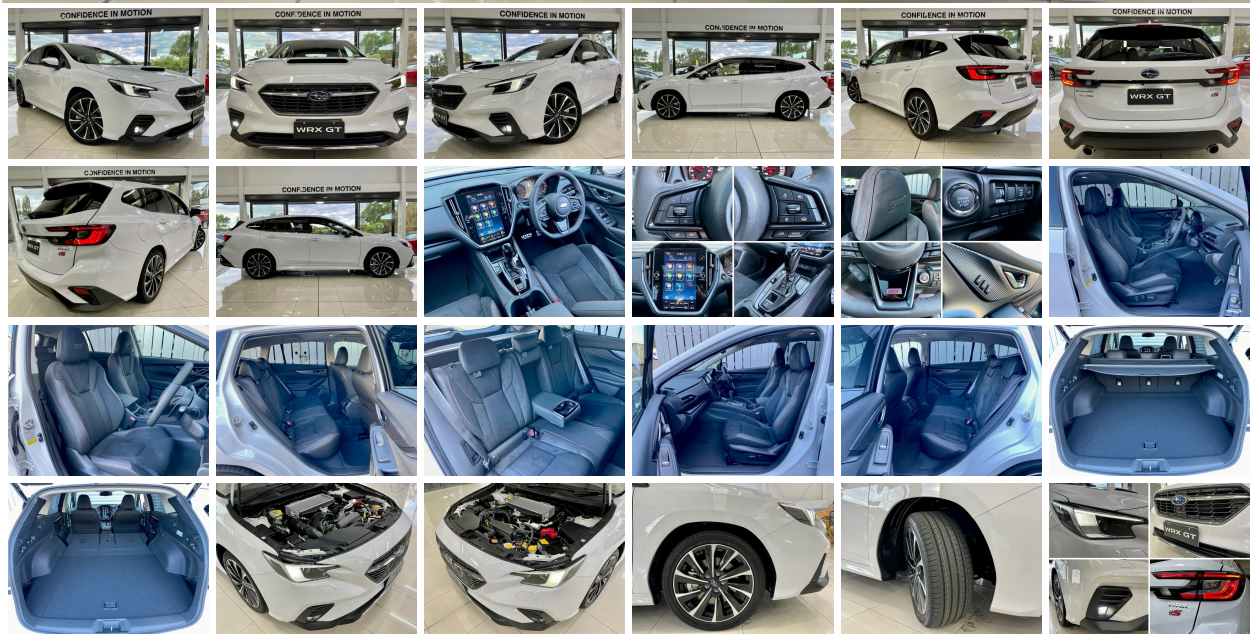


2024 Subaru WRX GT 2.4 TS AWD | #002823

\$64,990.00 \$59,990.00



NEW Subaru WRX GT 2.4 TS AWD

LEGENDARY CAR. LEGENDARY PRICE.

PURCHASE THE TOP OF THE LINE TS SPEC WRX SEDAN OR WAGON FOR JUST \$59,990 DRIVE AWAY!

[*Terms and conditions apply](#)

PLUS RECEIVE EXCLUSIVE BENEFITS AT MORRELL MOTORS:

- FREE GENUINE MAT SET VALUED AT \$299
- FREE NORTH ISLAND DELIVERY*

Offer valid until 30th June or while stock lasts.

ON ORDER - Secure today with \$1,000 deposit. FREE North Island delivery! Contact [our team](#) regarding delivery times and secure now through Morrell Motors, award winning Dealership!

NEW Subaru WRX GT 2.4T TS AWD - \$59,990 Drive Away!

Engine/Drivetrain:

- 2.4 litre 202KW/350NM Turbocharged 4 cylinder Boxer
- SPT 8 speed auto with paddle shift
- Symmetrical AWD
- Subaru Intelligent Drive
- Drive mode select to customise driving experience
- Electronic control dampers
- Built to meet Euro 6b emissions standard

Safety:

- 5-Star ANCAP Safety Rating
- 8 SRS air bags – dual front, side, curtain, driver knee & passenger seat cushion
- Driver monitoring system with facial recognition technology
- Vehicle dynamics control – stability/traction
- ABS braking with EBD and brake assist
- Ring-shaped reinforcement frames with side intrusion bars
- Eye-Sight clever crash avoidance technology
- Adaptive cruise control

- Pre-collision braking system
- Pre-collision brake assist
- Pre-collision throttle management
- Speed sign recognition
- Autonomous emergency steering
- Lane centering function
- Lane departure warning
- Lane change assist
- Lane sway warning
- Lane keep assist
- Lead vehicle start alert
- Adaptive driving beam
- Blind-spot monitor
- Rear cross traffic alert
- Reverse automatic braking
- Front, side & rear cameras
- ISOFIX & child seat anchors

Interior:

- Ultrasuede and synthetic leather seats
- Leather steering wheel
- Heated seats front & outboard rear
- 10-way power adjustable driver seat with dual memory
- 8-way power adjustable passenger seat
- Auto dimming rear view mirror
- Electronic park brake
- Dual climate air conditioning with rear vents
- Integrated 11.6-inch LCD touch screen infotainment
- Apple CarPlay and Android Auto
- CD/FM/AM/MP3/Bluetooth
- Satellite navigation
- Multi-function steering wheel
- Smart key – keyless entry and push button start
- Powered tailgate with hands-free badge sensor
- 40/20/40 split folding rear seat

Exterior:

- 140mm ground clearance
- 18-inch alloy wheels

- LED steering responsive headlights
- LED front fog lights
- LED daytime running lights
- Rain sensing wipers
- Tinted glass
- Electric sun roof
- Power folding side door mirrors – heated
- Rear spoiler

Warranty:

- 3 year/100,000km
- 6 year/100,000km on engine/driveline with Subaru service plan

View the NEW Subaru WRX GT 2.4 TS AWD in our showroom today.

Please [contact](#) our friendly sales team for full detailed specifications, accessory price list a finance/lease quote or trade in estimate.

[Brand New](#) models available in a range of colours.

View our [testimonials](#) on our website or follow us on [facebook](#) and see what our customers have to say!

Morrell Motors is one of Taupo's longest standing automotive Dealerships, operating since 1983. Come and experience the difference of buying a NEW Subaru from our trusted team.

Specifications

Stock Number: 002823

Year: 2024

Make: Subaru

Style: Station Wagon

Interior Colour: Black Ultrasuede with Synthetic Leather Trim with Heated Front & Rear Outboard Seats

Air Bags: 8

Clean Car Programme Fees: A Clean Car Programme (CCP) fee of \$4,255 applies to this vehicle. Fees are subject to change at any time as determined by the Waka Kotahi / NZTA and have been rounded up to the nearest dollar.

Transmission: 8 Speed SPT Automatic with Paddle Shift Sport Mode

Fuel Type: Petrol

Seats: 5

Stereo Type: 11.6-Inch HD Touchscreen FM / AM / DAB / CD / AUX / USB / Bluetooth / Apple CarPlay & Android Auto, TomTom Navigation

Kilometres: 10

Engine Details: 2.4 Litre 202KW / 350NM (Chain Drive) Turbocharged 4 Cylinder Boxer with SI Drive

CC Rating: 2387

Doors: 5

Drive Train: Symmetrical AWD - Active Torque Split

Exterior Colour: Ceramic White

Features

• Turbo • USB • Traction Control • Tinted Windows • Sun Roof • Stability Control • Smart Key • Reversing Camera • Remote Locking • Rear Wiper • Rear Spoiler • Rain Sensing Wipers • Push Button Start • Power Windows • Power Steering • Parking Sensors • NZ New • Memory Seats • Immobiliser • Heated Seats • GPS/Sat Nav • Driving/Fog Lights • Electric Seats • Electric Mirrors • Cruise Control • Climate Control • Child Seat Anchor Pts • Central Locking • Body Kit • Bluetooth • Auto Lights • Alloys • Alarm • Air Conditioning • ABS • 4 Wheel Drive

Fuel Saver & Safety Rating

Fuel Economy: **9.5L per 100km**

CO2 Emissions: **214 grams/km**

Annual fuel cost of \$3,720 - Cost per year is an estimate based on petrol price of \$2.80 per litre and an average distance of 14000 km. Emissions and Energy Economy figures standardised to 3P WLTP.

Rebate and Fee:



MORRELL MOTORS LTD

your one stop motoring shop - people doing business with people

17 Waikato Street (adjacent to
Countdown)
Taupo PO Box 867

07 378 5759
sales@morrellmotors.co.nz

Mark Morrell
021 759 070

Emily Hill
021 673 662

Garry Morrell
027 274 7579