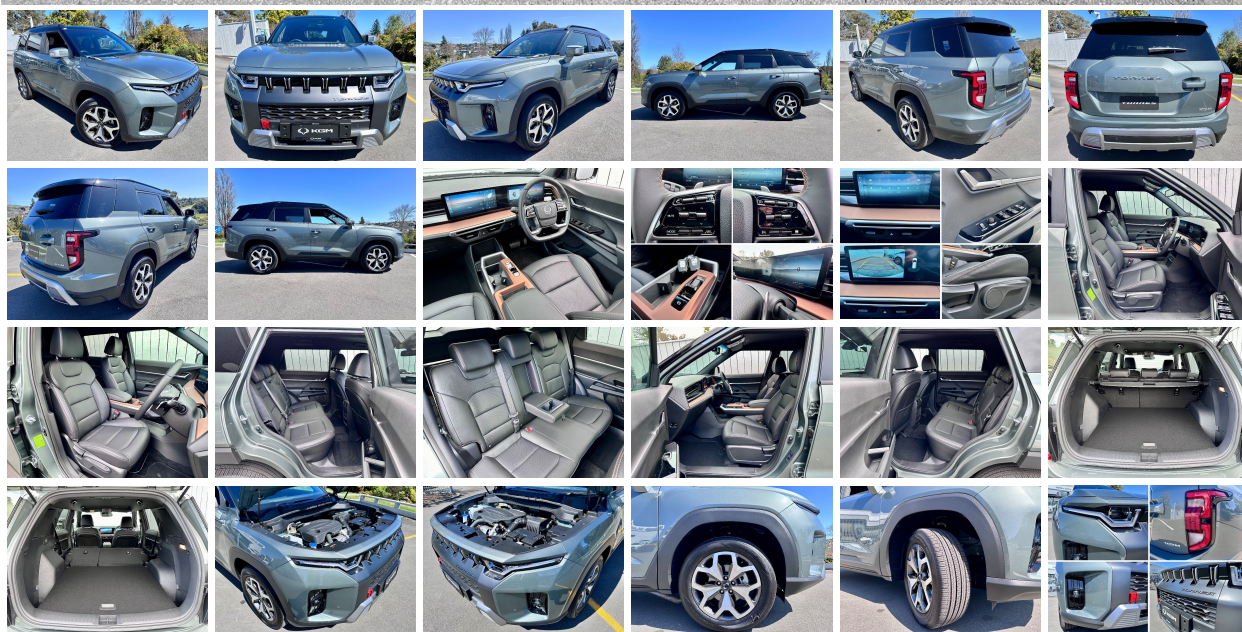


2025 KGM Torres 1.5L Petrol Turbo 2WD | #080956

\$46,990.00 \$34,990.00



NEW KGM Torres 1.5L Petrol Turbo 2WD

INTRODUCTORY OFFER NOW \$34,990, SAVE \$12,000! – FREE NORTH ISLAND DELIVERY

EXPLORE FULL DETAILS ONLINE – [VIEW HERE](#)

APPLY FOR VEHICLE FINANCE WITH UDC – [APPLY ONLINE](#)

ON ORDER - Secure today with \$1,000 deposit. Contact [Our Team](#) regarding delivery times and secure now through Morrell Motors, award winning Dealership!

NEW MY25 KGM Torres 1.5L Petrol Turbo 2WD - \$34,990 + on road costs

Engine/Drivetrain:

- 1.5l Petrol Turbo
- 120KW/339NM
- 6 speed automatic transmission
- 1500kg braked tow rating

Safety:

- 8 Airbags
- LDW lane departure assist
- LKA lane keeping assist
- High beam assist
- Safety exit warnings
- Front vehicle start alert
- Driver attention alert
- Safety distance alert
- Blind spot detection

Interior:

- Bluetooth audio Apple CarPlay/Android Auto
- Multi-function steering wheel
- Push button start
- Dual zone climate control
- Dual 12.3-inch touch screen infotainment
- Accented Leather seats
- Heated front seats

Exterior:

- 18-inch alloy wheels
- Smart proximity keyless entry
- Roof rails
- Fog lights
- Rear spoiler
- Two tone paint

Warranty:

- 5 Year/150,000km

Please [contact](#) our friendly sales team for full detailed specifications, accessory price list a finance/lease quote or trade in estimate.

[Brand New](#) models available in a range of colours.

View our [testimonials](#) on our website or follow us on [facebook](#) and see what our customers have to say!

Morrell Motors is one of Taupo's longest standing automotive Dealerships, operating since 1983. Come and experience the difference of buying a NEW KGM from our trusted team.

Specifications

Stock Number: 080956

Year: 2025

Make: KGM

Style: SUV

Air Bags: 8

External Web Link:

Seats: 5

Stereo Type: Dual 12.3 Inch Touchscreen FM / AM / USB / Bluetooth / Apple CarPlay / Android Auto

Interior Colour: Black Heated Accented Leather Trim

Transmission: 6 Speed Automatic with Paddle Shift

Fuel Type: Petrol

Engine Details: 1.5 Litre 120KW / 339NM Intercooled Turbo 4 Cylinder

CC Rating: 1497

Kilometres: 10

Drive Train: 2WD

Doors: 5

Exterior Colour: Forest Green Two Tone

Features

• USB • Turbo • Traction Control • Tinted Windows • Stability Control • Smart Key • Roof Rack • Reversing Camera • Remote Locking • Rear Wiper • Rear Spoiler • Rain Sensing Wipers • Push Button Start • Power Windows • Power Steering • Parking Sensors • NZ New • Leather Seat • Immobiliser • Heated Seats • Driving/Fog Lights • Electric Seats • Electric Mirrors • Cruise Control • Climate Control • Child Seat Anchor Pts • Central Locking • Body Kit • Bluetooth • Auto Lights • Alloys • Air Conditioning • ABS

Fuel Saver & Safety Rating

Fuel Economy: **8.2L per 100km**

CO2 Emissions: **188 grams/km**

Annual fuel cost of \$3,210 - Cost per year is an estimate based on petrol price of \$2.80 per litre and an average distance of 14000 km. Emissions and Energy Economy figures standardised to 3P WLTP.

Rebate and Fee:



MORRELL MOTORS LTD

your one stop motoring shop - people doing business with people

17 Waikato Street (adjacent to
Countdown)
Taupo PO Box 867

07 378 5759
sales@morrellmotors.co.nz

Mark Morrell
021 759 070

Emily Hill
021 673 662

Garry Morrell
027 274 7579